

BEAR'S CLUB REPLAT, A P.U.D.

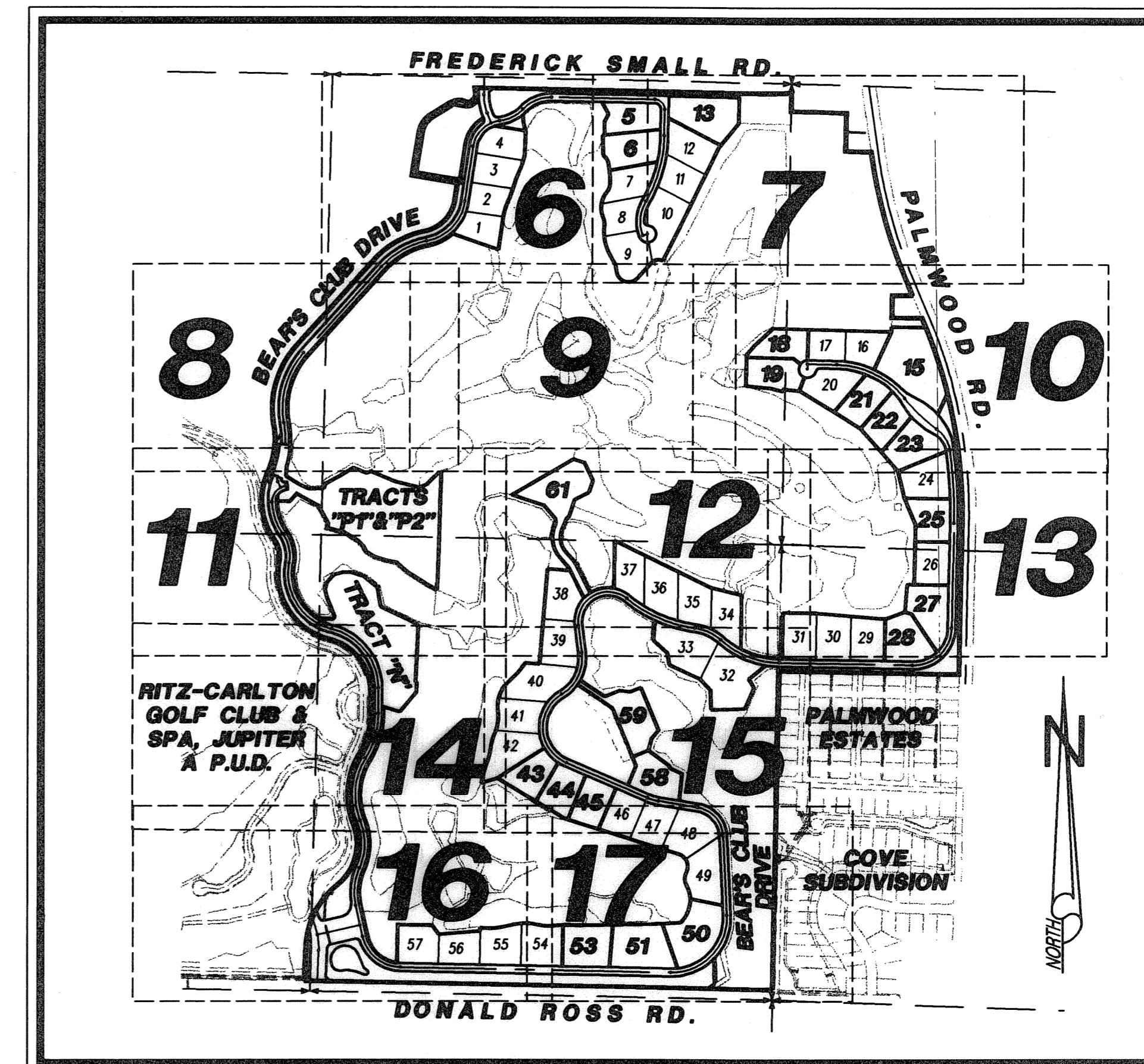
BEING A REPLAT OF A PORTION OF BEAR'S CLUB, A P.U.D.,
AS RECORDED IN PLAT BOOK 86, PAGES 122 THROUGH 128,
AND A PARCEL OF LAND DESCRIBED IN OFFICIAL RECORD BOOK 11237 PAGE 75,
ALL IN THE PUBLIC RECORDS OF PALM BEACH COUNTY FLORIDA,
LYING IN SECTIONS 19 & 20, TOWNSHIP 41 SOUTH, RANGE 43 EAST
TOWN OF JUPITER, PALM BEACH COUNTY, FLORIDA

SHEET 5 OF 21

JULY 2005

37

ACREAGE TABULATION (UNIT NO.44)				
LOT 1	NOT PART OF THIS PLAT	UPLAND PRESERVE TRACTS		COMMON AREAS
LOT 2	NOT PART OF THIS PLAT	TRACT "PR1"	1.026	TRACT "B" (COMMON AREA)
LOT 3	NOT PART OF THIS PLAT	TRACT "PR2"	0.578	TRACT "C1" (COMMON AREA)
LOT 4	NOT PART OF THIS PLAT	TRACT "PR3"	0.122	TRACT "C2" (COMMON AREA)
LOT 5	1.253	TRACT "PR4"	0.364	TRACT "C3" (COMMON AREA)
LOT 6	1.410	TRACT "PR5"	0.531	TRACT "D" (COMMON AREA)
LOT 7	NOT PART OF THIS PLAT	TRACT "PR6"	1.689	TRACT "E" (COMMON AREA)
LOT 8	NOT PART OF THIS PLAT	TRACT "PR7"	0.494	TRACT "F" (COMMON AREA)
LOT 9	NOT PART OF THIS PLAT	TRACT "PR8"	0.267	TRACT "G" (COMMON AREA)
LOT 10	NOT PART OF THIS PLAT	TRACT "PR9"	18.386	TRACT "GA" (COMMON AREA)
LOT 11	NOT PART OF THIS PLAT	TRACT "PR10"	0.142	TRACT "H" (COMMON AREA)
LOT 12	NOT PART OF THIS PLAT	TRACT "PR11"	9.561	TRACT "HA" (COMMON AREA)
LOT 13	1.941	TRACT "PR12"	0.513	TRACT "HB" (COMMON AREA)
LOT 14	DELETED	TRACT "PR13"	1.604	TRACT "HC1" (COMMON AREA)
LOT 15	2.859	TRACT "PR14"	0.046	TRACT "HC2" (COMMON AREA)
LOT 16	NOT PART OF THIS PLAT	TRACT "PR15"	0.244	TOTAL
LOT 17	NOT PART OF THIS PLAT	TRACT "PR16"	0.214	
LOT 18	1.156	TRACT "PR17"	0.498	
LOT 19	1.269	TRACT "PR18"	0.422	
LOT 20	NOT PART OF THIS PLAT	TRACT "PR19"	1.407	
LOT 21	1.198	TRACT "PR20"	0.124	
LOT 22	1.145	TRACT "PR21"	0.132	
LOT 23	1.430	TRACT "PR22"	0.010	
LOT 24	NOT PART OF THIS PLAT	TOTAL	38.374	
LOT 25	1.257			
LOT 26	NOT PART OF THIS PLAT			
LOT 27	1.574	WETLANDS		GOLF COURSE
LOT 28	1.477	WETLAND SLOUGH 1	17.567	TRACT "1" (GOLF COURSE)
LOT 29	NOT PART OF THIS PLAT	WETLAND SLOUGH 2	1.372	TRACT "J1" (GOLF COURSE)
LOT 30	NOT PART OF THIS PLAT	WETLAND SLOUGH 3	9.629	TRACT "J2" (GOLF COURSE)
LOT 31	NOT PART OF THIS PLAT	WETLAND 9	1.851	TRACT "J3" (GOLF COURSE)
LOT 32	NOT PART OF THIS PLAT	WETLAND 10	2.822	TRACT "J4" (GOLF COURSE)
LOT 33	NOT PART OF THIS PLAT	WETLAND 12	0.100	TRACT "J5" (GOLF COURSE)
LOT 34	NOT PART OF THIS PLAT	WETLAND 14	5.044	TRACT "J6" (GOLF COURSE)
LOT 35	NOT PART OF THIS PLAT	WETLAND 14A	0.787	TRACT "J7" (GOLF COURSE)
LOT 36	NOT PART OF THIS PLAT	WETLAND 15	1.242	TRACT "J8" (GOLF COURSE)
LOT 37	NOT PART OF THIS PLAT	WETLAND 18	0.510	TRACT "J9" (GOLF COURSE)
LOT 38	NOT PART OF THIS PLAT	WETLAND 20	2.661	TOTAL
LOT 39	NOT PART OF THIS PLAT	WETLAND 29	0.793	
LOT 40	NOT PART OF THIS PLAT	WETLAND 33	1.158	
LOT 41	NOT PART OF THIS PLAT	WETLAND 34	0.487	ROADWAYS
LOT 42	NOT PART OF THIS PLAT	WETLAND 36	1.061	TRACT "A1" (ROADWAY)
LOT 43	1.180	TOTAL	47.084	TRACT "A2" (ROADWAY)
LOT 44	1.182			TRACT "A3" (ROADWAY)
LOT 45	1.139			TOTAL
LOT 46	NOT PART OF THIS PLAT			
LOT 47	NOT PART OF THIS PLAT	WETLAND BUFFERS		
LOT 48	NOT PART OF THIS PLAT	WETLAND SLOUGH BUFFER 1	5.373	
LOT 49	NOT PART OF THIS PLAT	WETLAND SLOUGH BUFFER 2	0.670	
LOT 50	2.034	WETLAND SLOUGH BUFFER 3	3.854	
LOT 51	2.000	WETLAND BUFFER 9	0.978	
LOT 52	DELETED	WETLAND BUFFER 10	1.698	MISCELLANEOUS AREAS
LOT 53	1.579	WETLAND BUFFER 12	0.356	TRACT "N" (COTTAGE)
LOT 54	NOT PART OF THIS PLAT	WETLAND BUFFER 14.1	1.351	TRACT "O" (RESERVE)
LOT 55	NOT PART OF THIS PLAT	WETLAND BUFFER 14.2	1.202	TRACT "OA" (RESERVE)
LOT 56	NOT PART OF THIS PLAT	WETLAND BUFFER 14A	0.680	TRACT "OB" (RESERVE)
LOT 57	NOT PART OF THIS PLAT	WETLAND BUFFER 15	0.741	TRACT "P1" (GOLF COURSE CLUBHOUSE)
LOT 58	1.326	WETLAND BUFFER 18	0.387	TRACT "P2" (COTTAGE)
LOT 59	1.757	WETLAND BUFFER 20	1.199	TRACT "R1"
LOT 60	DELETED	WETLAND BUFFER 29	0.731	TOTAL
LOT 61	2.402	WETLAND BUFFER 33 & 34	1.735	
TOTAL	32.568	WETLAND BUFFER 36	0.696	
		TOTAL	21.651	
LAKES				WETLAND PRESERVATION EASEMENTS
TRACT "L" (WATER)	4.127			WETLAND PRESERVATION EASEMENT 1
TRACT "M" (WATER)	0.529			WETLAND PRESERVATION EASEMENT 2
LAKE "N1"	2.130			WETLAND PRESERVATION EASEMENT 3
LAKE "N2"	5.460			WETLAND PRESERVATION EASEMENT 4
LAKE "N3"	1.391			WETLAND PRESERVATION EASEMENT 5
LAKE "S1"	1.977			WETLAND PRESERVATION EASEMENT 6
LAKE "S3"	2.167			TOTAL (NOT INCLUDED IN TOTAL AREA)
LAKE "S6"	2.026			
TOTAL	19.807			
		GRAND TOTAL		323.674



KEY SHEET

LIDBERG LAND SURVEYING, INC.
675 West Indiantown Road, Suite 200,
Jupiter, Florida 33458 TEL. 561-748-8454

CAD: K:\UST \ 194143 \ BEARCLUB \ 2090306 \ SHEET4.DGN			
REF.			
FLD. B.D.	FB.	PG.	JOB 00-209(306)
OFF. E.C./R.W.			DATE JUNE 2005
CKD. D.C.L.	SHEET 5 OF 21	DWG.	D00-209P

LB4431 8/24/2005 10:10:26 AM